



1503/18 Hoff Boulevard Southbank, VIC



2



2

## Near-new North-East Facing Apartment Home

Melbourne Square is Southbank's "must be" address and this two bedroom two bathroom apartment on 15th floor is almost untouched by the years in the good hands of previous resident.

With North/East-facing floor to ceiling windows covering living and both bedrooms, this sun-lit apartment home offers:

- \* Trendy kitchen equipped with quality Miele appliances, stone bench tops & plenty of storage
- \* Open plan living & dining with floorboards throughout
- \* Spacious master bedroom with private ensuite
- \* Second bedroom with full-wall built in robes
- \* Well sized stylish bathrooms with dedicated designed facilities
- \* Hideaway European laundry with additional sink

Location is key here - explore the best of Melbourne from your doorstep and walk to Crown, the Arts Precinct, St Kilda Rd & Queensbridge Street shopping, Boyd Community Hub, the Royal Botanic Gardens, riverfront restaurants, Federation Square and the CBD. Best of all, you can get everyday fresh food from a dual-storey, full-line Woolworths supermarket on the ground floor!

**Yi Zeng**

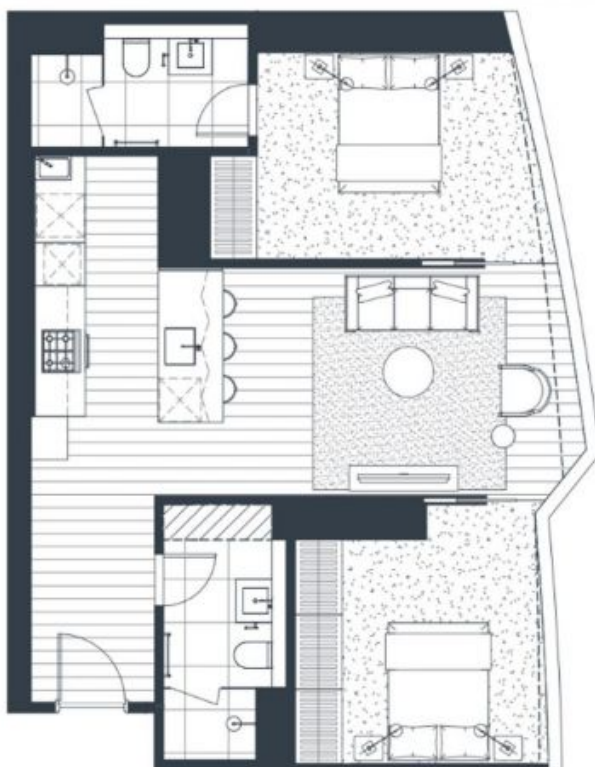
0452 667 881

**Lina Wang**

0450 026 669

Shaded line denotes the boundary line variation across floor plates within this type. Refer to the sales list for specific apartment areas.

Shaded area denotes the column line variation across floor plates within this type. Refer to the sales list for specific apartment areas.



Kavanagh Street



West Tower



East Tower

Power Street

## 2 Bed, 2 Bath East Tower

Total Area Range:  
72.7m<sup>2</sup> - 78.5m<sup>2</sup>

Apartment No:

1103E, 1203E, 1303E, 1403E,  
1503E, 1603E, 1703E, 1803E,  
1903E, 2003E, 2103E, 2203E,  
2303E, 2703E, 2803E, 2903E,  
3003E, 3103E, 3203E, 3303E,  
3403E, 3503E, 3603E, 3703E,  
3803E, 3903E, 4003E, 4403E,  
4503E, 4603E, 4703E, 4803E,  
4903E, 5003E, 5103E, 5203E

1503/18 Hoff Boulevard

Southbank, VIC

