



4709/639 Lonsdale Street Melbourne, VIC



2



1

## Newly Refurbished CBD Apartment with Spectacular Views & Luxury Amenities

\*\* PLEASE REGISTER BY EMAIL OR TXT MESSAGE to Patrick 0481880776 FOR INSPECTION.

\*\* PLEASE apply through Ignite if you are interested in this property.

Perfectly positioned in the heart of the CBD, this newly refurbished apartment in the Upper West Side complex offers all the excitement of city living with lock-and-leave convenience.

Southern Cross Station and the airport shuttle bus are just across the road, while RMIT and Melbourne University are easily accessible via tram. You'll be within easy walking distance of Spencer Outlet Shopping, Coles, Asian grocery stores, Flagstaff Gardens, Marvel Stadium, Docklands, restaurants, and cafés.

Apartment Highlights:

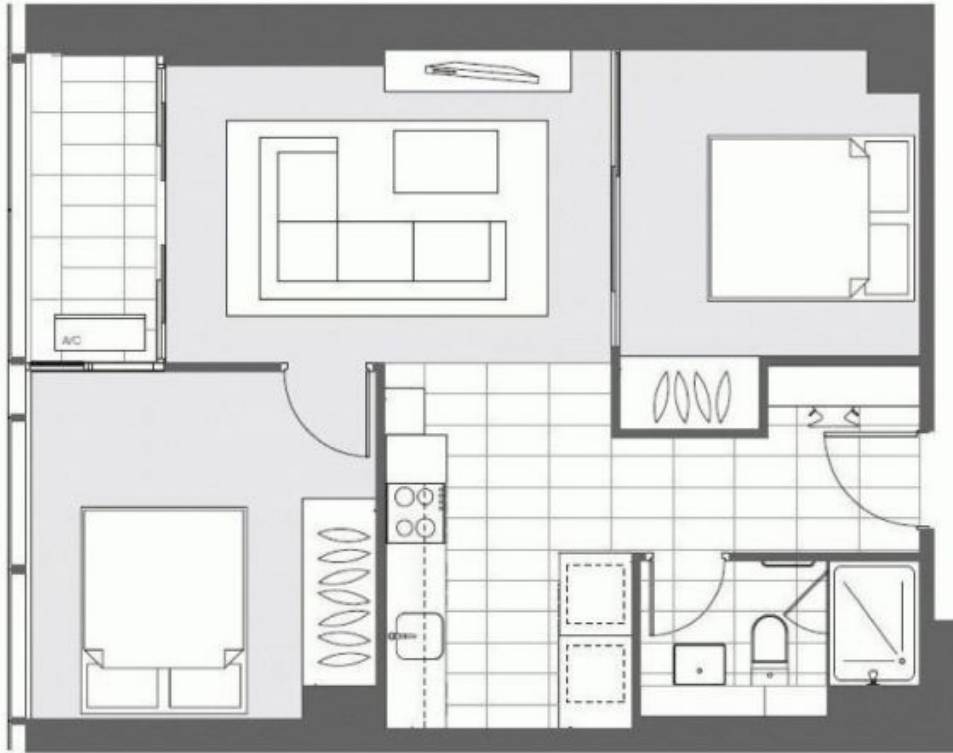
- Newly refurbished with brand new Bosch oven and induction cooktop
- Brand new blinds in the main bedroom

**Patrick Pu**

0481880776

**Yi Zeng**

0452 667 881



# **4709/639 Lonsdale Street MELBOURNE 3000**

*Whilst every attempt has been made to ensure the accuracy of the floor plan, all measurements, fixed installations and furnishings are for illustrative purposes only and should be used as such by any prospective purchaser/tenant.*

